



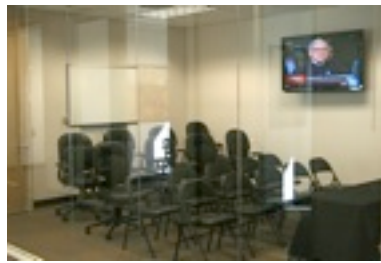
Where people-technology-capital meet to collaborate



**MOBILE WORK SPACE**

Why work in an uncomfortable or loud cafe? Work and collaborate in our professional shared work space, with complimentary internet access and beverage service.

**Daily Fee** \$20



**FREQUENT MEETING PACKAGE**

Eight hours of board room usage with internet access during regular business hours.

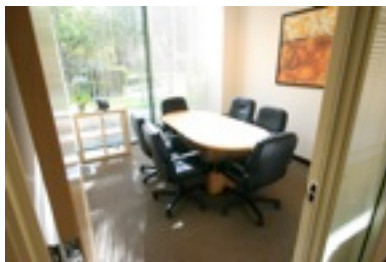
**Monthly Fee** \$200



**MAIL IDENTITY PACKAGE**

Basic mail handling and receipt with use of prestigious mailing address. Weekly mail forwarding and package drop off/pick ups. Postage and shipping costs are additional.

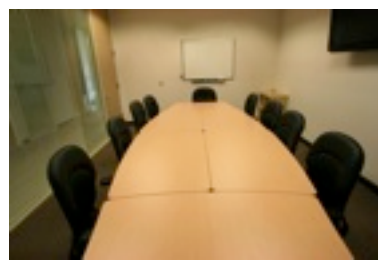
**Monthly Fee** \$65



**BUSINESS IDENTITY PACKAGE**

Four hours of meeting room usage, internet access and mail receiving and handling services.

**Monthly Fee** \$95



**VIRTUAL OFFICE PACKAGE**

Sixteen hours of meeting room usage, internet access and mail receiving and handling services.

**Monthly Fee** \$235



**MULTI LOCATION PACKAGE**

Twenty five hours of meeting room usage in our other locations with internet access, mail receiving and handling services included for primary location only.

**Monthly Fee** \$295

**ADDITIONAL SERVICE OPTIONS**

**TELEPHONE ANSWERING SERVICE**

\$135 per month - Includes 400 incoming calls, basic call screening, integrated voice mail and off site call transfer.

**AFTER HOURS / EVENING ACCESS**

\$400 per month - After Hours Plan with access to conference room space after hours from 5 p.m. to 9 p.m. on weekdays only up to sixteen week day evening hours per month. After hour weekday usage is scheduled in 4 hour increments. Add evening access to the Frequent Meeting, Business Identity, Virtual Office and Multi-location plans above for only \$275 more per month. (IMPORTANT: Not applicable for Mobile Work Space and Mail Identity Plans. Users assume liability for damage or theft when FMP conference space is used without staff supervision after hours. Staff supervision at \$50 per hour is available. Additional hours billed at \$50 per hour. Premises are under 24 hour video surveillance.)

**CUSTOMIZED PLAN - LET US KNOW WHAT YOU NEED**

Our flexible plans require only a month to month commitment. Service Retainers are waived when auto paid by credit card.

Terms and Conditions for all plans: Usage of services must be used during each billing cycle, no carryover permitted. In lieu of deposit monthly payment by valid credit card or debit card is required. A 30 day calendar month notice period for termination of services. One time set up fee of \$75 charged for each plan except a \$400 set up fee is charged for the Multi Location Package.

6130 Stoneridge Mall Road, Suite 105, Pleasanton, CA 94588 925-847-2020  
Visit [www.firstmeetingplace.com](http://www.firstmeetingplace.com) or email [info@firstmeetingplace.com](mailto:info@firstmeetingplace.com)