

**First Meeting Place supports business growth and development. FMP is committed to helping your business thrive. In addition to a variety of affordable options available to establish your business, FMP offers resources and guidance to launch your next venture successfully.**

**Flexibility is the key. Whether you need an office for an hour, a day, a month, a year or longer, FMP offers versatile rental terms and scaling options.**

**Location, Location, Location... First Meeting Place is conveniently located at the junction of the Tri Valley's two major freeways (580 and 680), next the new West Dublin / Pleasanton BART Station and directly across from Stoneridge Mall. Ample free parking is available next to the building.**

## Contact Us

**925-847-2020**

First Meeting Place  
6130 Stoneridge Mall., Suite 105  
Pleasanton, CA 94588  
email: [info@firstmeetingplace.com](mailto:info@firstmeetingplace.com)

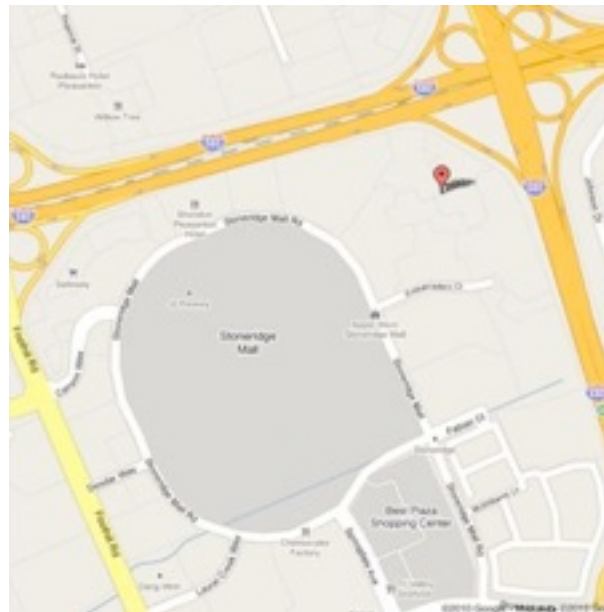
## Directions

### From Highway 580

1. Exit at Foothill Road
2. If coming from the east, turn left on San Ramon Road
3. Continue south on Foothill Road
4. Turn left at Canyon Way
5. Turn left at Stoneridge Mall Road
6. Pass the Bart Parking Structure
7. Drive into Stoneridge Corporate Plaza complex on left.
8. Building at back of complex

### From Highway 680

1. Exit at Stoneridge Drive exit 29
2. Go west on Stoneridge Drive
3. Turn right at Stoneridge Mall Road
4. Turn Right on Embarcadero Drive
5. Drive into Stoneridge Corporate Plaza complex on left
6. Building at back of complex



**People-Technology-Capital Meeting  
to Collaborate and Innovate**

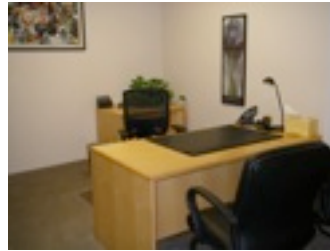
[www.firstmeetingplace.com](http://www.firstmeetingplace.com)



# Conference Facilities



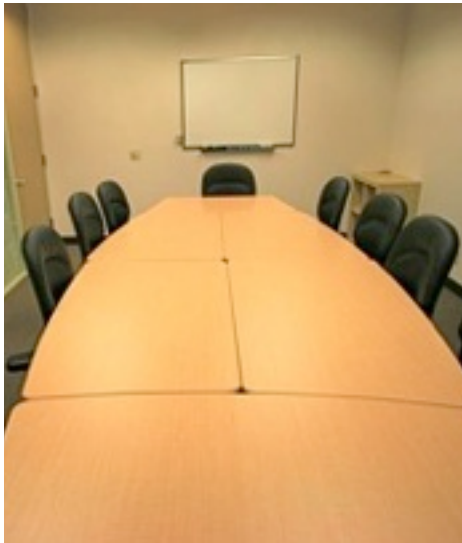
# Full Time Offices



# Mobile Work Space



## Professional Meeting Space



Hourly and daily rental of conference rooms and private offices are available for meetings of all sizes.

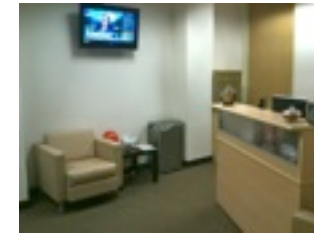


## Individual Offices

Flexible space and terms  
Affordable and Private

Private offices are available for individuals or small groups.

Plug and Play space includes phones and internet connectivity.



## Image Matters

Plans for any budget!

Mail Service Plans are \$75/mo.

Virtual Office plans include mail service and conference room usage from 8 hours to 25 hours range from \$95 to \$295/mo.

Mobile Work Space start at \$25/day.

Additional plans and services are available.



## Support Staff

At your service

Our support staff is available to help get your projects done.

